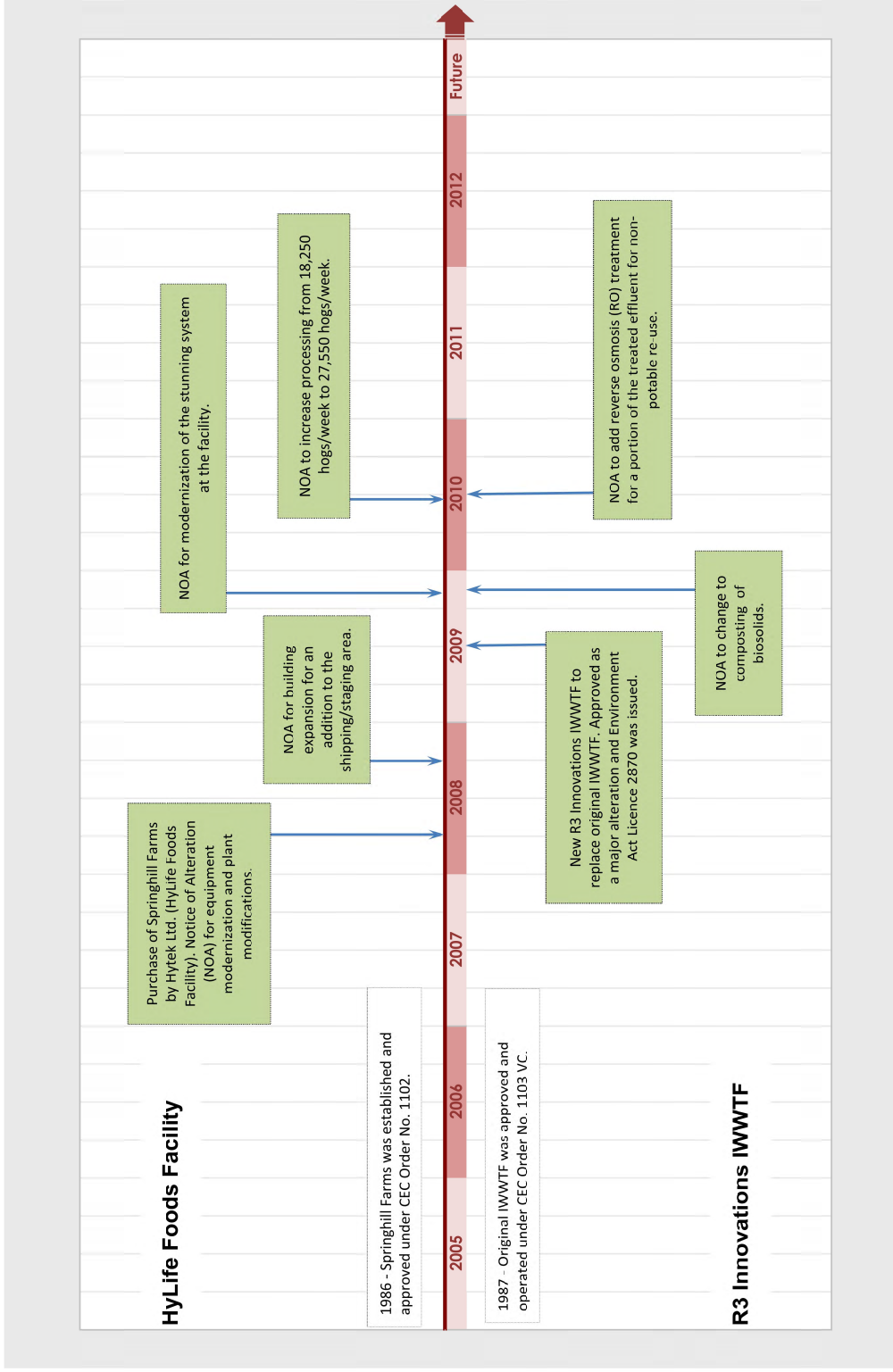


Approvals History of the HyLife Foods Facility and R3 Innovations IWWTF



January 16, 2013



Proposed Alterations at HyLife Foods

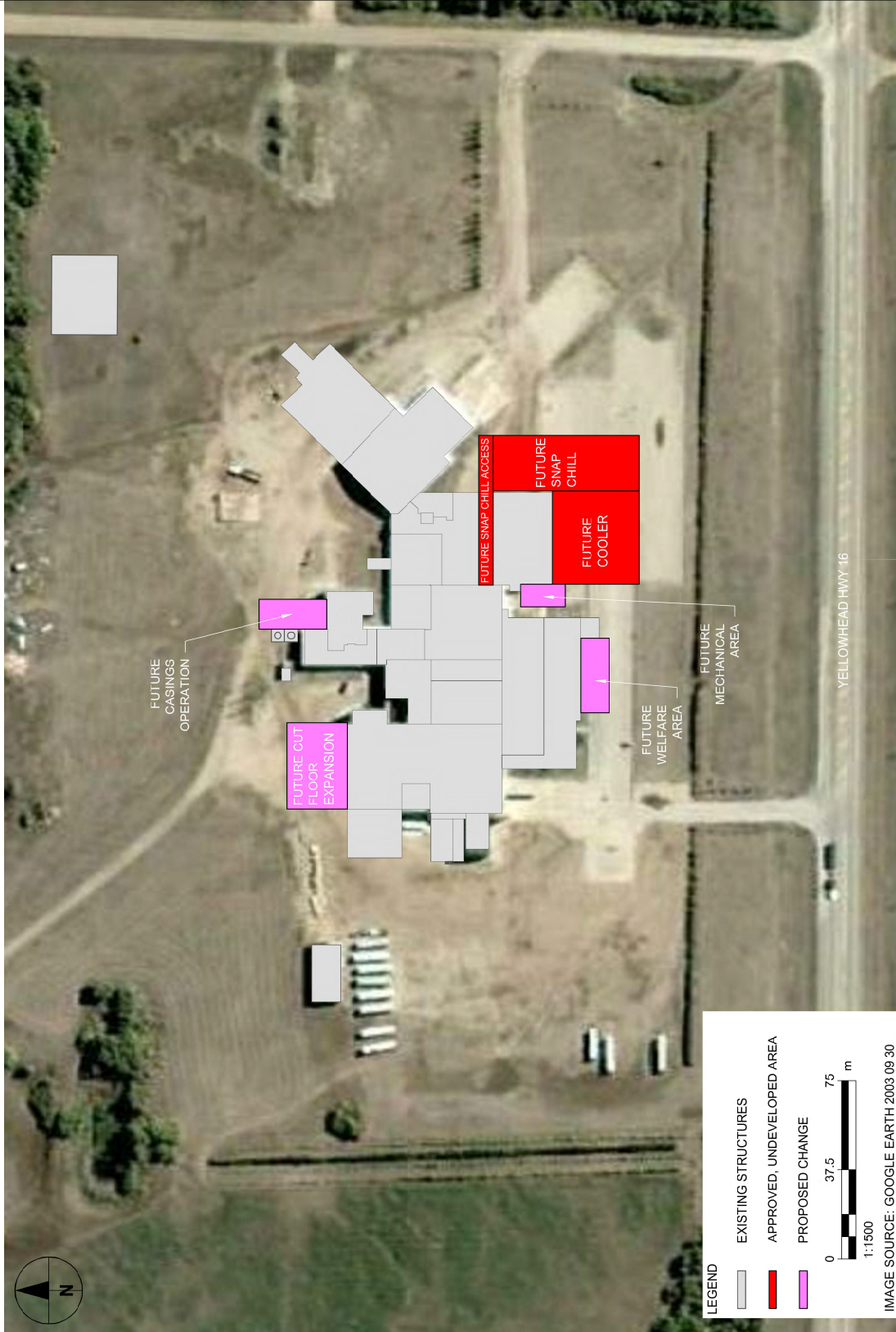
- Increase in processing
 - Currently 27,550 hogs/week
 - Increase to 37,500 hogs/week (2 kill shifts and 2 cut shifts)
 - Add casings processing (including heparin production)
 - Approximately 300 additional employees required
- These changes mean that more room is needed at the HyLife Foods Facility
 - Casings operation expansion - 353 m²
 - Cut floor expansion - 910 m²
 - Snap chill and cooler expansion - 3,225 m²
 - Previously approved but never implemented
 - Welfare area expansion - 364 m²
 - Mechanical area expansion - 176 m²
- The increase in processing will generally increase all aspects of the HyLife plant operations including:
 - Add new final products (processed casings and heparin)
 - Increase final product out (increase from approximately 2,992 tonnes/week to 4,703 tonnes/week)
 - Require more water (for employee welfare and casings processing)
 - Increase strength of wastewater sent to the IWWTf
 - Require more trucking (final products, packaging, renderable materials, cleaning chemicals, etc.)

January 16, 2013

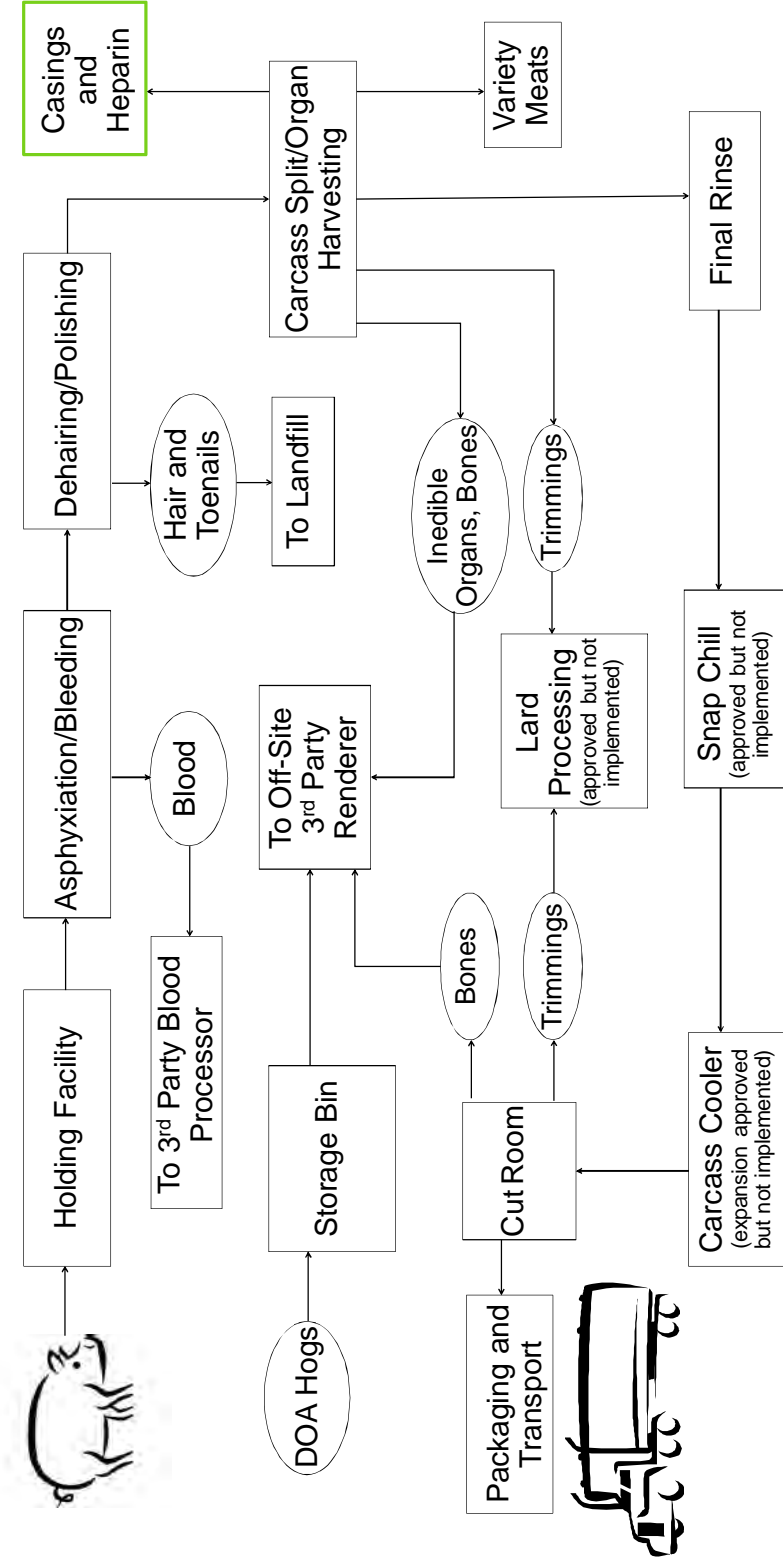


AECOM

Plan View of HyLife Foods Expansion



HyLife Foods Process Flow Diagram



Note: Green Denotes Proposed Process Changes

January 16, 2013



Proposed Alterations at the R3 Innovations IWWTF

- To accommodate the wastewater generated by the additional processing at the HyLife Foods Facility, the following additional infrastructure will be required at the IWWTF to continue to meet licence conditions
 - Aeration basin
 - Blower unit
 - Membrane cassettes in each membrane tank
 - Additional UV unit
 - Replacement of sludge pumps
- Two additional operators will also be required



Historic Treatment

- R3 Innovations IWWTF has proven to provide higher quality effluent than Environment Act Licence Limits and is anticipated to continue with the proposed alterations

	Average 2012 Effluent Concentrations	Environment Act Licence Limits
Total Nitrogen (mg/L)	12.4	15
Total Phosphorus (mg/L)	0.5	1
Total Suspended Solids (mg/L)	5.1	25
5-day Carbonaceous BOD (mg/L)	7.5	25
Fecal Coliform (MPN/100 mL)	<3	200
E. Coli (MPN/100 mL)	<3	200



January 16, 2013



Plan View of R3 Innovations IWWTF Expansion

